

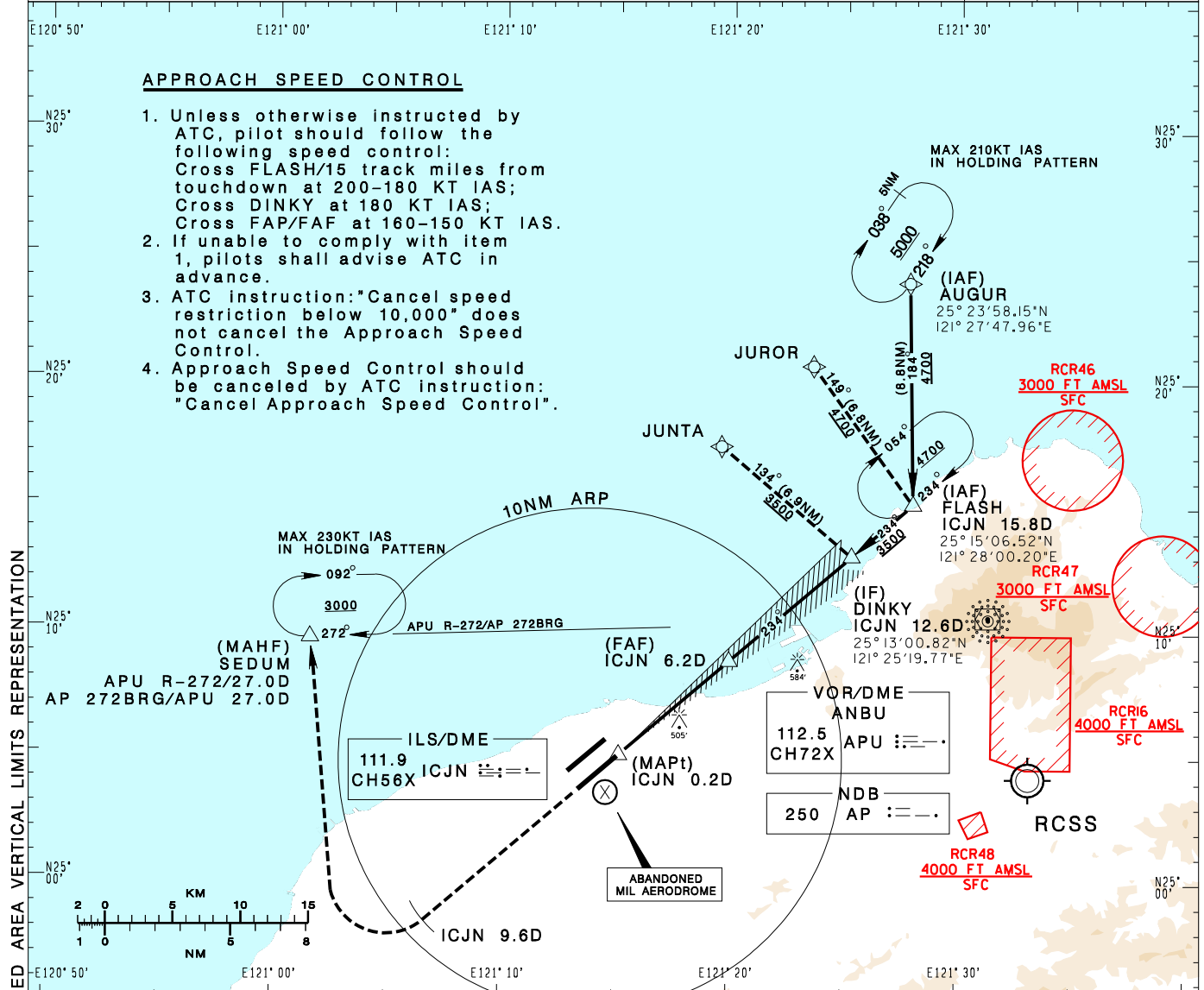
臺灣桃園國際機場
TAIPEI/TAIWAN TAOYUAN INTL AD

RCTP
LOC RWY23L

TAIPEI APP 125.1 128.5 125.6	TAIPEI TWR 118.7 129.3	ATIS 127.6	VAR 5° W 		
Apt Elev: 108'	Rwy23L DTHR Elev: 96'	Trans Level: FL130			Trans Alt: 11,000'
BEARINGS ARE MAGNETIC; DISTANCES ARE NAUTICAL MILES; ELEVATIONS, HEIGHTS IN FEET					

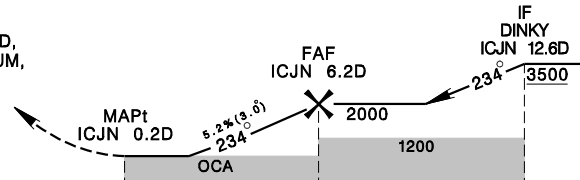
APPROACH SPEED CONTROL

- Unless otherwise instructed by ATC, pilot should follow the following speed control:
Cross FLASH/15 track miles from touchdown at 200-180 KT IAS;
Cross DINKY at 180 KT IAS;
Cross FAP/FAF at 160-150 KT IAS.
- If unable to comply with item 1, pilots shall advise ATC in advance.
- ATC instruction: "Cancel speed restriction below 10,000" does not cancel the Approach Speed Control.
- Approach Speed Control should be canceled by ATC instruction: "Cancel Approach Speed Control".



DIST to ICJN	3DME	4DME	5DME	6DME
ADVISORY ALT	1050	1370	1690	2010

MISSED APCH:
CLIMB ON HDG 234 UNTIL ICJN 9.6D,
THEN TURN RIGHT DIRECT TO SEDUM,
MAINTAIN 3000 AND HOLD.
*NO TURN PRIOR TO MAPt.



NM FROM ICJN	5	0	5	10	15
--------------	---	---	---	----	----

MINIMA (OCA IN FT, VIS IN M, OCH IN FT)

CATEGORY	A	B	C	D
STRAIGHT IN	880/1200 RVR1200 784	880/1600 784	880/2900 784	880/2900 784
STRAIGHT IN (ALS OUT)	880/1600 784	880/2000 784	880/3600 784	880/3600 784
CIRCLING	880/1900 772	930/2800 822	1030/4400 922	1030/4800 922

NOTE
1. CIRCLING NOT AUTHORIZED
SOUTHEAST OF RWY 05R/23L.
2. ATS SURVEILLANCE REQUIRED
FOR AUGUR TO FLASH AND
MISSED APCH SEGMENTS.
*DME REQUIRED.

CHANGES: NEW PAGE NUMBER, UPDATE RESTRICTED AREA, VERTICAL LIMITS REPRESENTATION